

# Borso-Screen

## Cleanable Metall Filter Cartridge

**Borso-Screen** filter cartridges are made from stainless steel metall and have a perfectly controlled particle removal efficiency and benefits against disposable filter cartridges.

Formats:

- stainless steel wire mesh media,
- sintered fibre absolute rated depth media,
- sintered metall (powder sintered),
- wedge wire (triangular wire).

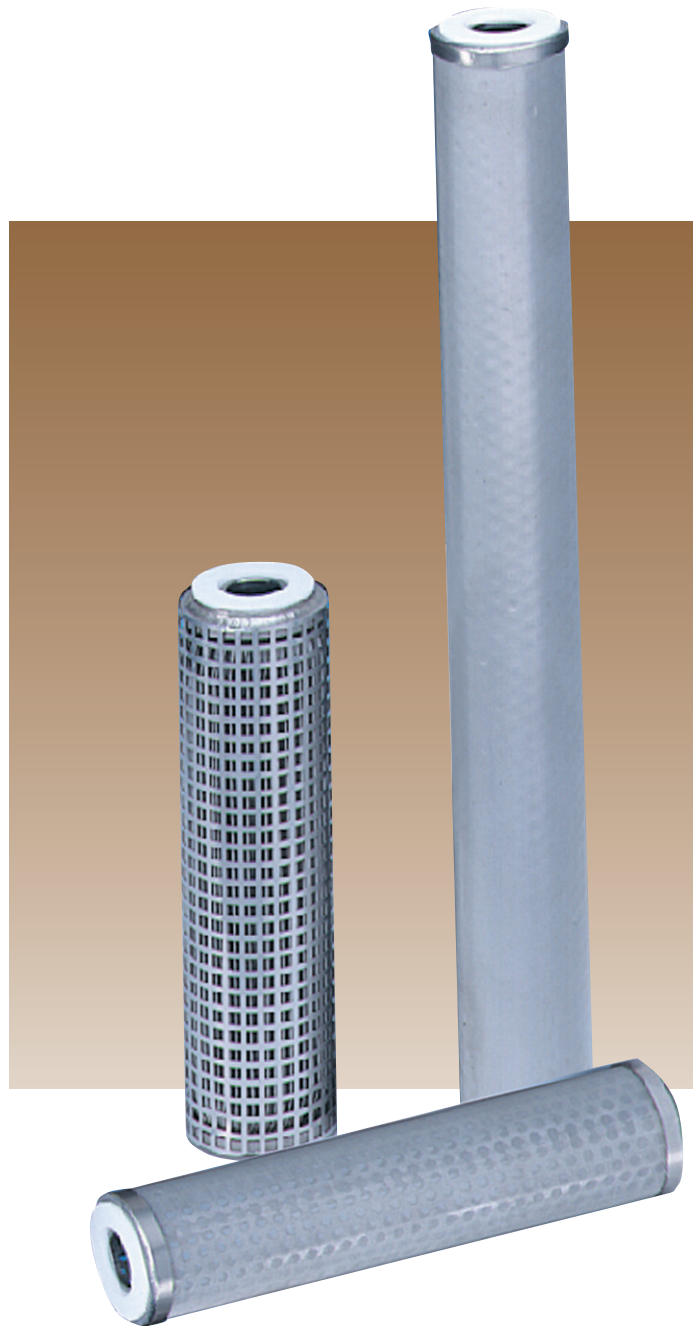
Available both non-pleated and pleated media for higher surface area (wire mesh and sintered fibre only). Sintered fibre elements are produced by sintering together at high temperatures metall fibres so creating a depth layer with absolute rated filtering characteristics.

**Borso-Screen** filter cartridges are available in the following absolute and nominal particle retention ratings:

- 3, 5, 10, 15, 20, 40 and 75 micron (absolute rated sintered fibre elements) and
- 25, 50, 75, 100, 150, 200, 250, 300, 450, 700 and 1000 micron (wire mesh elements).

**Borso-Screen** filter cartridges have been specially developed for filtration of fluids with a wide variety of characteristics, including:

- high viscosity,
- high temperature,
- high purity,
- corrosive properties



## Borso-Screen Features & Benefits

- Complete range of filter pore ratings,
- No fiber migration, even at high temperatures,
- Withstands high pressure drops, enabling filtration of high viscosity polymers,
- Designed for evaluated service temperatures (up to 450°C),
- Compatibility with wide range of chemicals,
- Constant particle removal efficiency,
- Cleanable and fully recyclable,
- Interchangeable elements for standard housings.