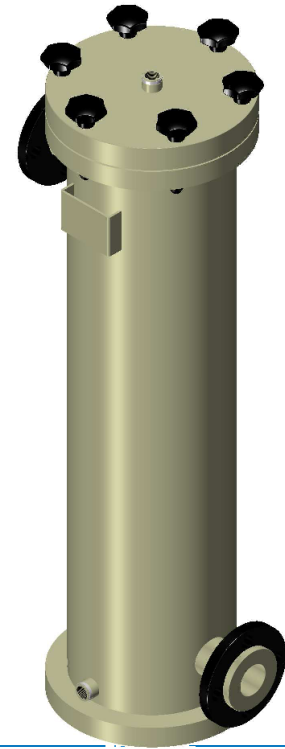




### VCF-1 & VCF-2 Series



### Specifications

Materials	
Housing	Polypropylene (PP)
	Polyethylene (HD-PE)
Bolts	Stainless steel
O-ring	EPDM/FPM
Dimensions	
Diameter VBF-1	250 mm
Diameter VBF-2	250 mm
Bag length	Size 1, Size 2
Other	
Inlet/Outlet	DN 25 to 100
	½" to 2"
Drains/vent	½" BSP
Max. Temperature	60° C
Max. Pressure @ 40° C	6 bar or 10 bar

Our standard VCF-1 and VCF-2 are available in 6 bar and 10 bar. The housings are very suitable for use in brackish and seawater applications and also have a high chemical resistance. The housings are designed according to the PED. The position of the inlet and outlet can be changed to the customers requirements. Options: valves, pressure gauges, automatic air release.

#### Ordering code: VCF-2-PP6E-50F

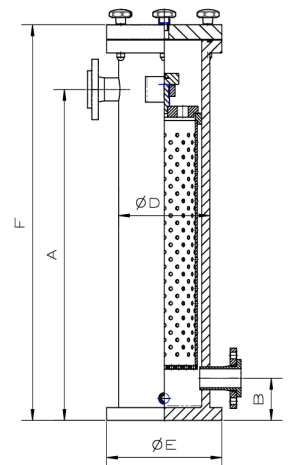
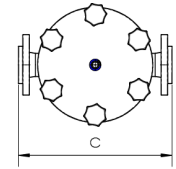
<b>Type</b>	<b>DN + Connection</b>
VCF = Cartridge	F = Flange
VBF = Bagfilter	FT = Female Thread
VSF = Strainer	MT = Male Thread
VDF = High flow	<b>O-ring</b>
<b>Size Bag</b>	E = EPDM
<b>Material</b>	V = FPM
PP = Polypropylene	<b>Pressure</b>
HD-PE = Polyethylene	6 = 6 bar @ 40° C
PVDF = Polyvinylidene fluoride	10 = 10 bar @ 40° C

### Benefits

- In- and outlet position can be chosen
- Pressure up to 10 bar
- High chemical resistance
- Can be in environments with high concentrations of salt
- Optimal for use in desalination systems
- Low maintenance
- Easy bag change

VCF-1 & VCF-2 Series

	VCF-1		VCF-2		
Dimensions in mm	Inlet / outlet DN 32/40/50	Inlet / outlet DN 65/80	Inlet / outlet DN 32/40/50	Inlet / outlet DN 65/80	Inlet / outlet DN 100
A	575	560	905	890	880
B	115	125	115	125	135
C	420	450	420	450	450
D	250	250	250	250	250
E	315	315	315	315	315
F (6 bar/10 bar)	740/770	740/770	1050/1080	1050/1080	1160/1190



Pos	Name	Material
1	Handwheel	bakelite
2	Washer	Stainless steel
3	Vent 1/2" BSP	PP / HD-PE
4	Lid	PP / HD-PE
5	O-ring	EPDM / FMP
6	Nut	PP / HD-PE
7	Pressure plate	PP / HD-PE
8	Bolt set	Stainless steel
9	Inlet	PP / HD-PE
10	Housing	PP / HD-PE
11	Name tag	PP / HD-PE
12	Outlet	PP / HD-PE
13	Drain 1/2" BSP	PP / HD-PE

